



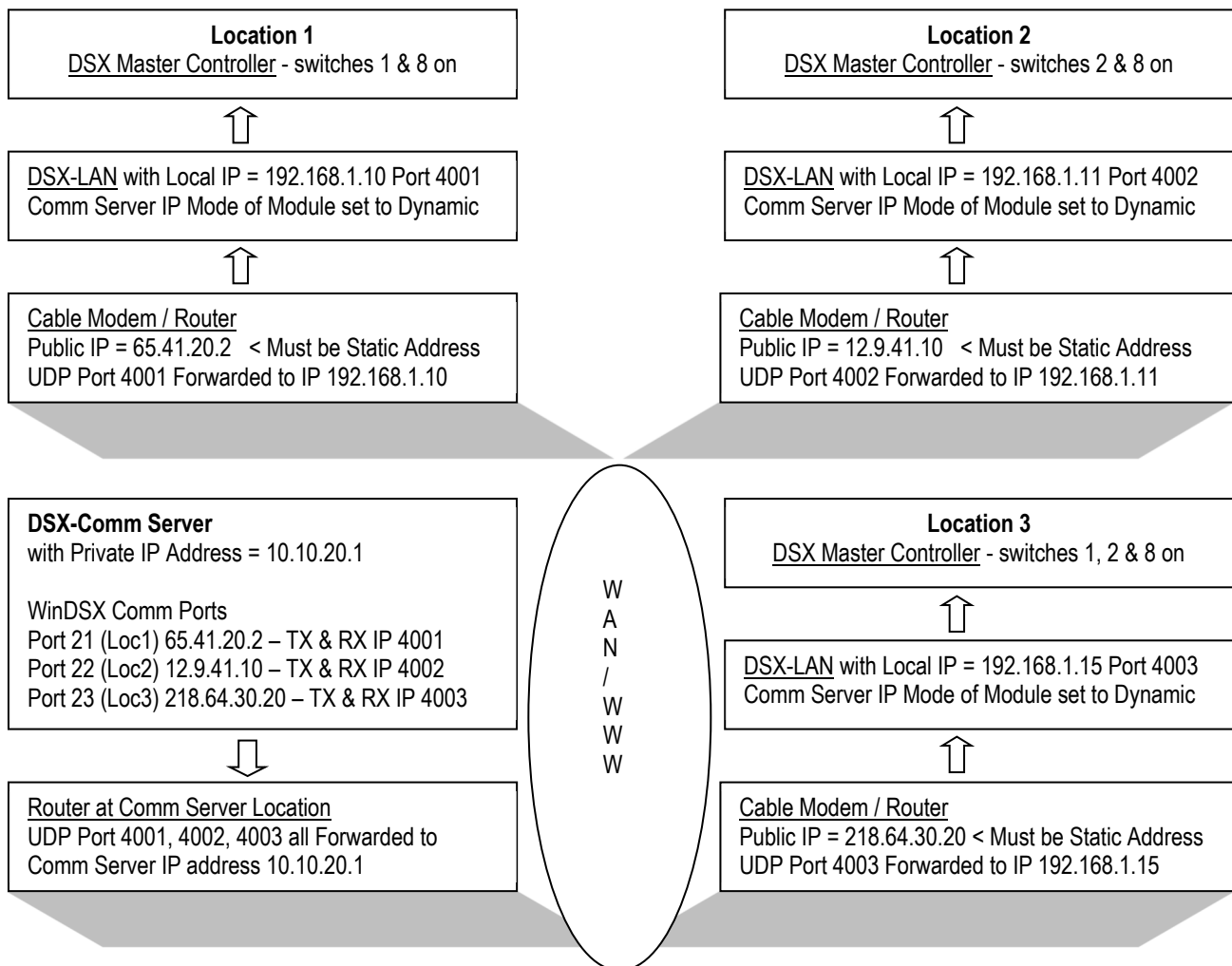
DSX-WAN INTERNET COMMUNICATIONS

WIDE AREA NETWORK COMMUNICATIONS

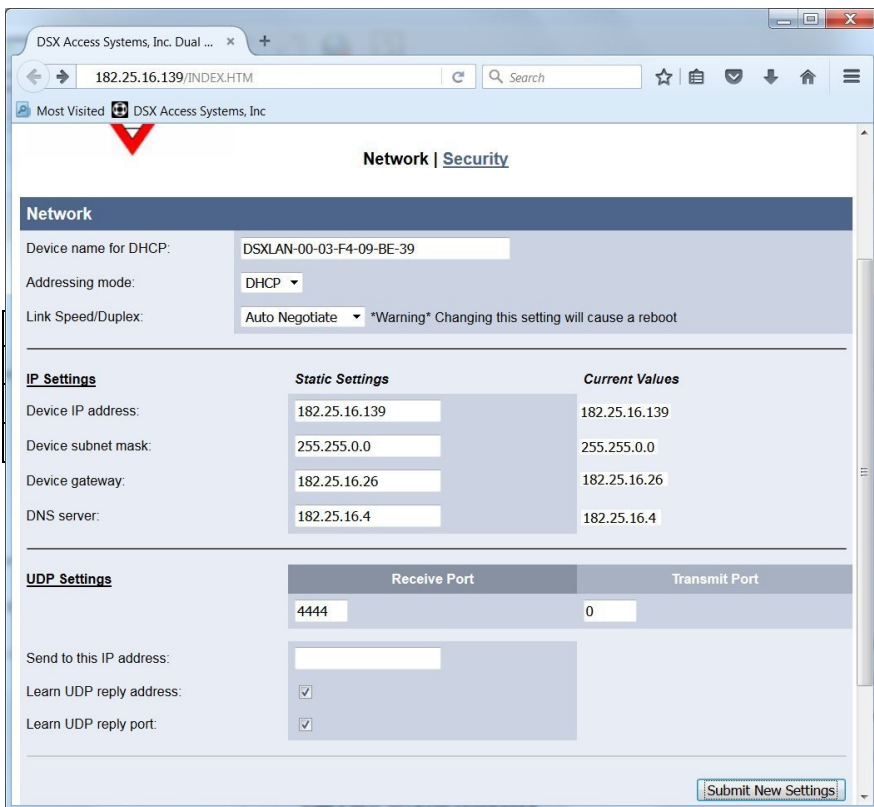
DSX IP Communications can be used on Local Area and Wide Area Networks as well across segments using the Internet for their connectivity. This application requires some knowledge of networks, routers, IP communications and addressing. Below is a typical blueprint of using DSX for a centralized approach to system administration for multiple sites and customers.

DSX-AES256 can be added to the system to provide encrypted communications to each Location. Each Location is given its own encryption password. Without AES-256 enabled, the system sends all data encoded without any clear text or names but not encrypted. Routers require Static IP Addresses that will not change if they are restarted.

This type of communication requires DSX-LAN-D modules with Packet Mode enabled.



VIEW OF PROGRAMMING INTERFACE (DSX-LAN)



DSX-LAN Module to 1040 Master Controllers - RS-232

DSX-LAN Module to 1040 Master Controllers - RS-232

DSX-LAN	1042	1043	1044
Tx	4	16	4
Rx	3	15	3
Gnd	5	17	5

DSX-LAN Module to 1020 Master Controllers - RS-485

DSX-LAN	1022	1021	1032
Tx +	49	51	55
Tx -	48	52	56
Rx +	51	49	53
Rx -	50	50	54