



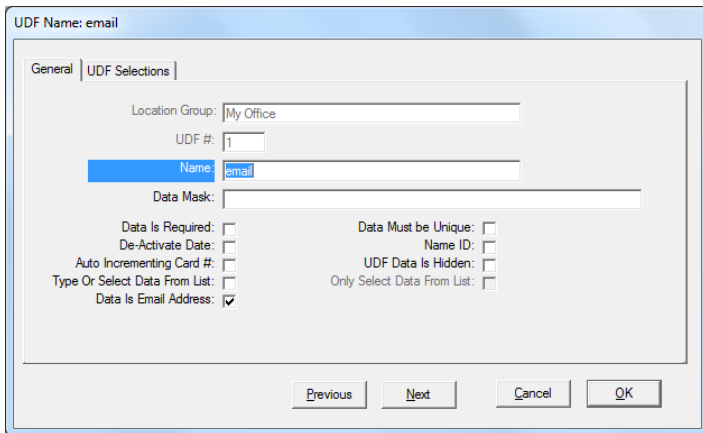
ALARM NOTIFICATION BY EMAIL OR TEXT

REQUIREMENT

WinDSX Versions 3.7.36 and 4.8.8 and higher

BY EMAIL

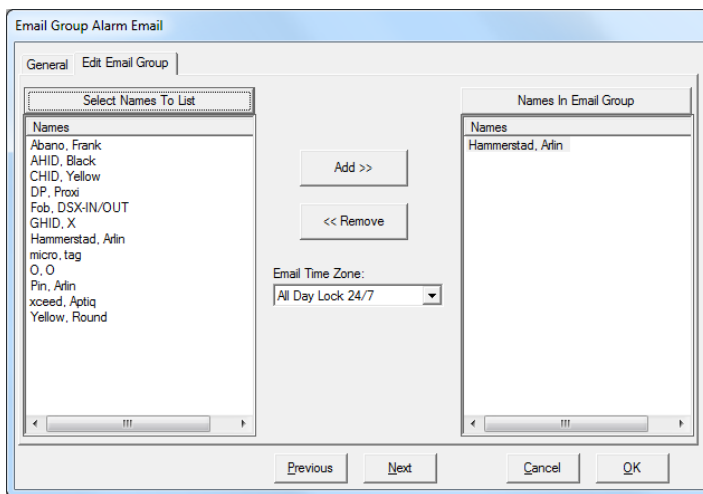
Location, Device, and Inputs can be individually selected to send notification to Email Groups on Alarm via an SMTP Server.



ELIGIBILITY

Card Holders with an Email address in a designated UDF field are eligible to be included in the Alarm Email Group. Data is Email Address must be checked.

Figure 1 Card Holder UDF required for Email Alarm Notification



Alarm notification to Email Groups is governed by Time Zone and can include one or more recipients. If the alarm occurs outside of the Time Zone, the email will not be sent.

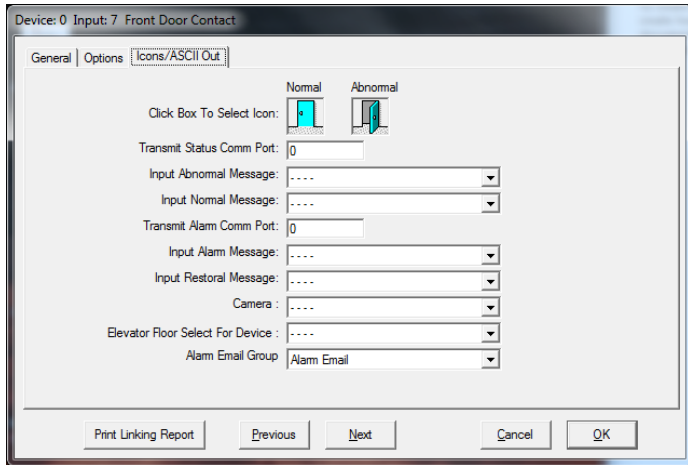
Multiple Email Groups can be created with different Time Zones and members.

Step by step instructions are available in the DSX Software by pressing F1 (Help).

Figure 2 Set Up for Email Group for alarm notification

BY TEXT

Using the Alarm Email Notification feature, an email can be sent to a Cell Phone as a Text Message using the cell phone provider's SMS Gateway. Most Cell Phone providers have a SMS Gateway that will turn an Email into a Text Message and send it to the subscriber's phone.



Once the Email Groups are defined, they can be assigned to Inputs, Devices, and Locations.

Each Alarm point can have one Email group assigned with one or multiple people in the Email group.

Figure 3 Device with designated Alarm Email notification

EXAMPLES OF EMAIL GROUPS

Several email groups created for one Location:

1. IT director receives email or text alarm notification when Server room goes into alarm.
2. Warehouse manager receives email or text alarm when the dock door is left open and goes into alarm.
3. Security manager receives notification for both of the above examples.

Setup for the above example:

Email Group 1: IT Director and Security manager

Email Group 2: Warehouse manager and Security manager.

Card Holders that are to receive an Email Notification must have an Email Address in a UDF field that is configured as an Email Address. Email Groups can be assigned to a location, to each device and to each input desired. Those that have an Email Group assigned will send an email upon alarm. The Help F1 system in the Software has step by step instructions on how to set this up.

